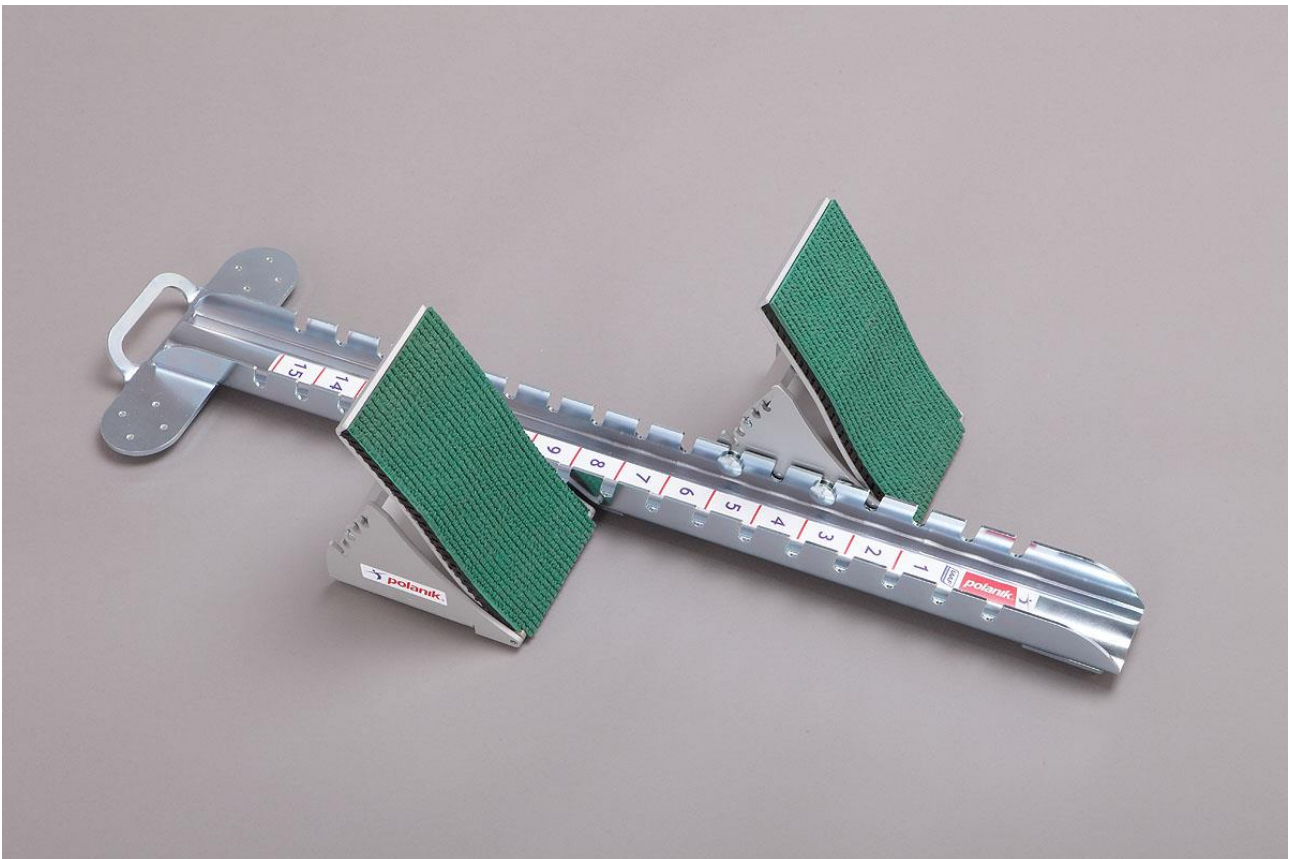


## TECHNICAL SPECIFICATION

Competition steel-aluminium starting block  
with high foot supports

**PBS15-03-W**

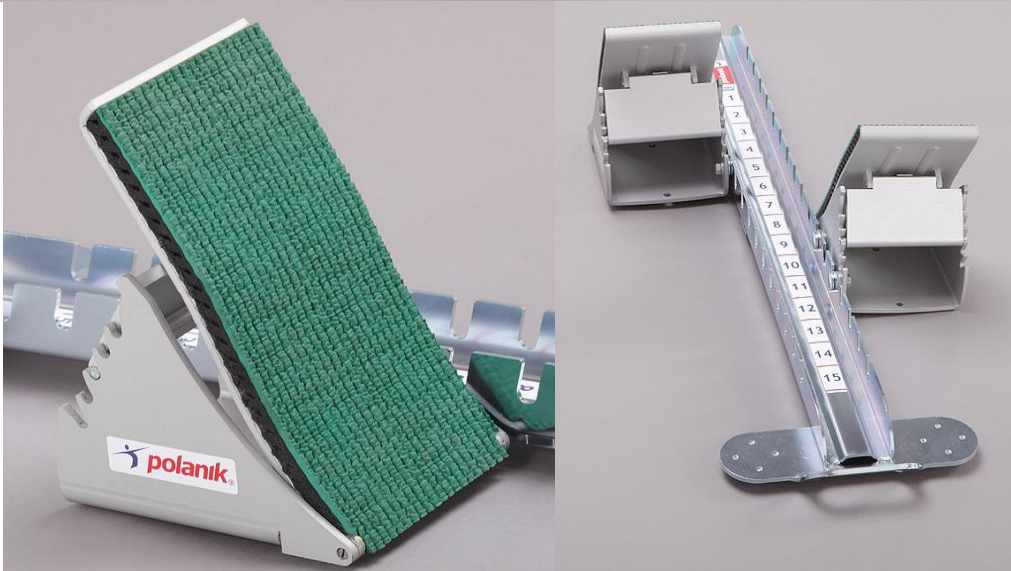
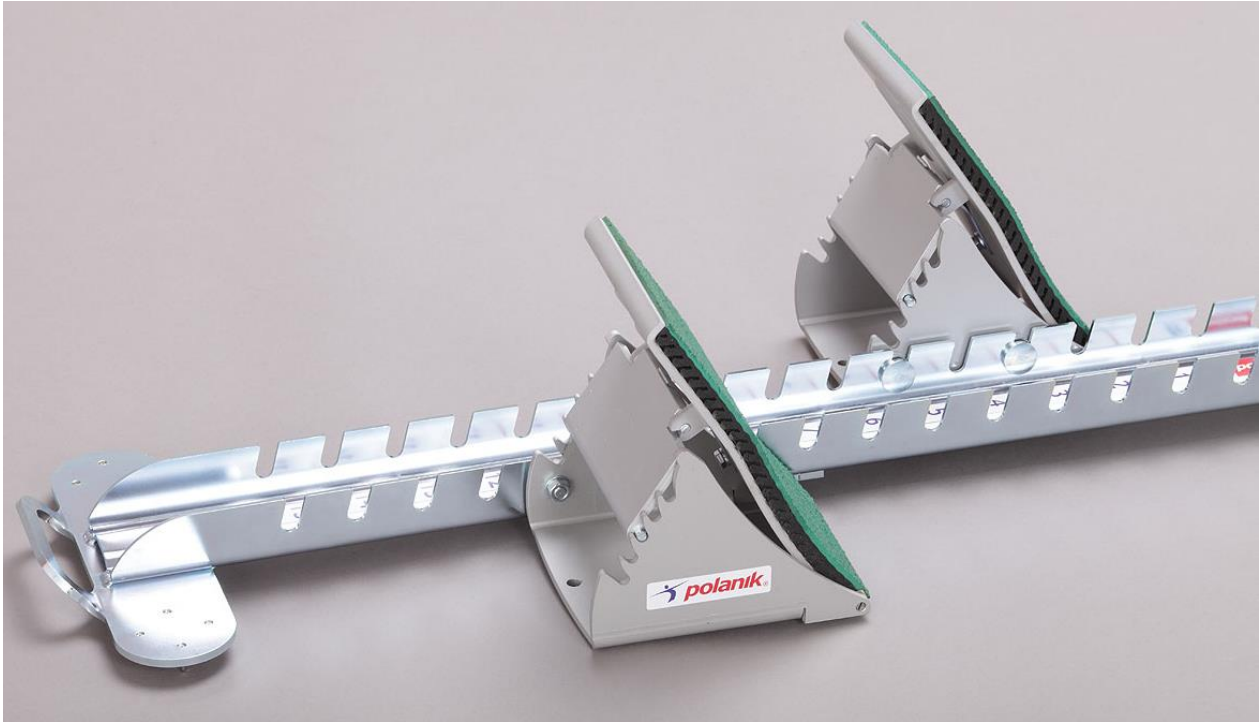


File: 2016-06-15

PRODUCT SUPPORT  
Paweł Ciechanowski  
[p.ciechanowski@polanik.com](mailto:p.ciechanowski@polanik.com)

### I. General description and use

PBS15-03-W has got a solid steel construction with high foot supports. The block is designed for athletics competition and training of races up to and including 400 m (including the first leg of the 4x200 m and 4x400 m).

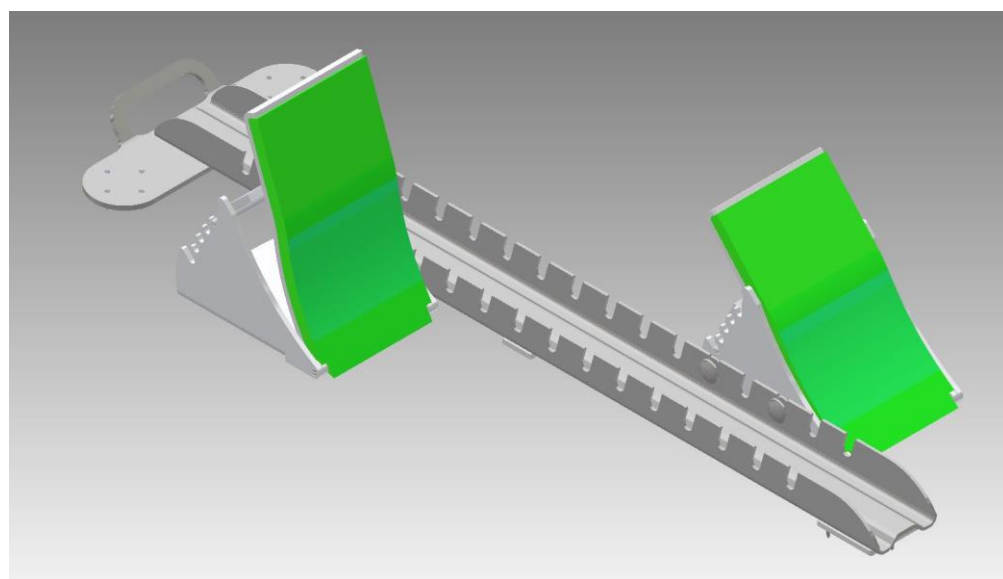
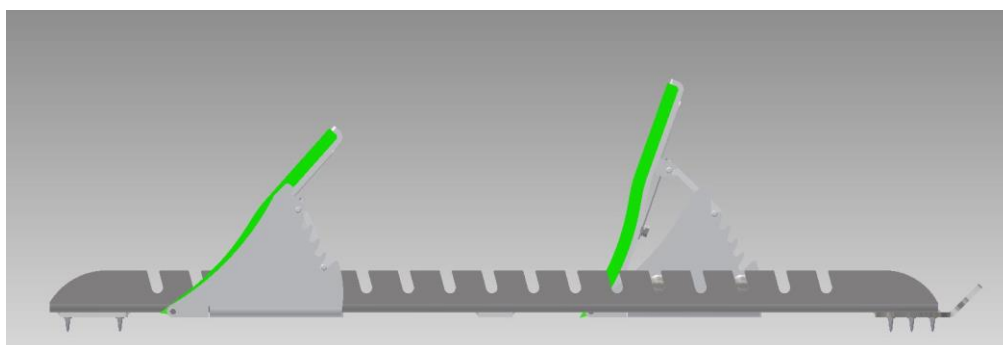


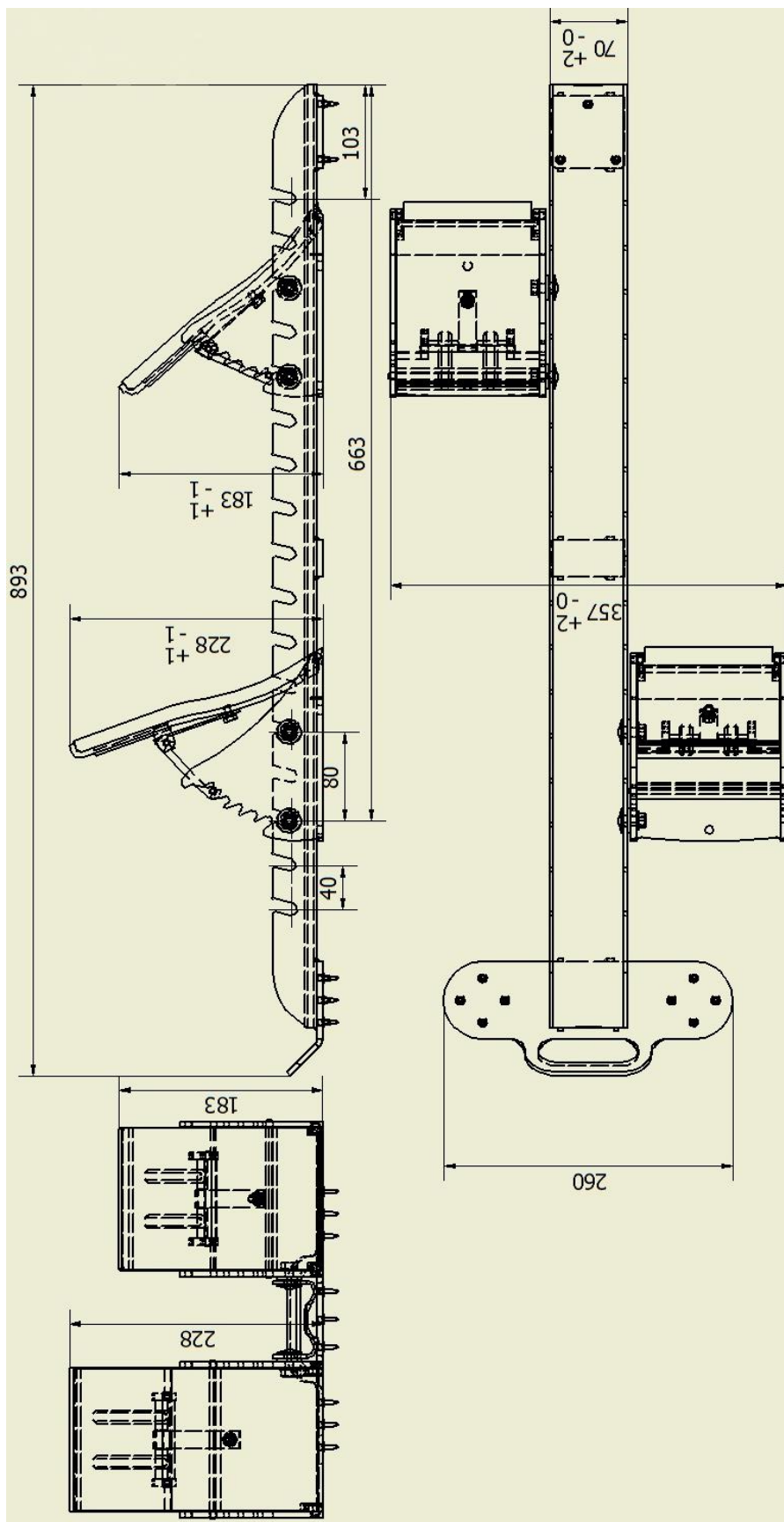
**PBS15-03-W © 2016 Polanik**

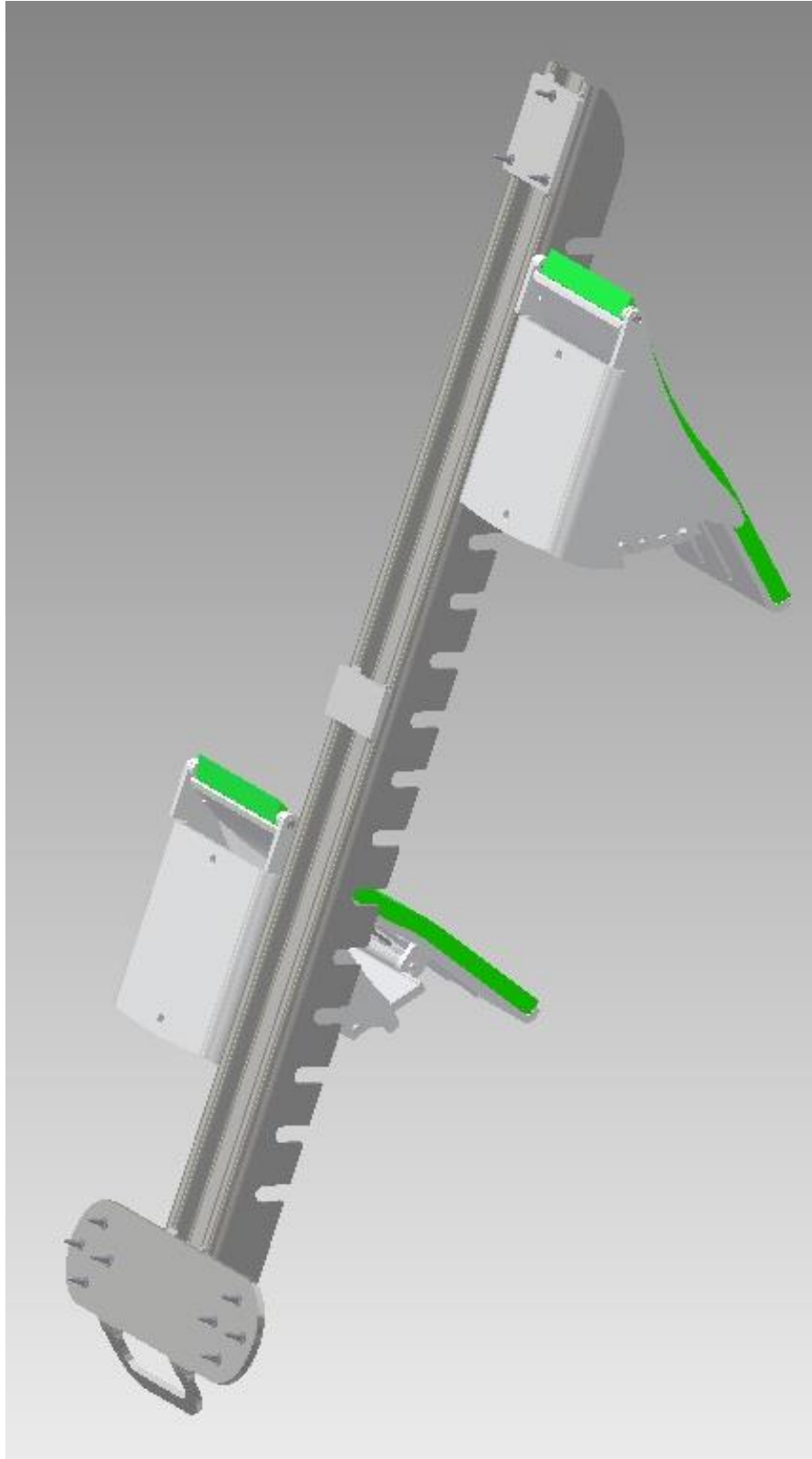
The producer reserves the right to introduce without warning changes in product constructions and colours.

## II. Technical specification

| Code                                    | PBS15-03-W   |
|---|--|
| Type                                    | certified, competition steel-aluminium                               |
| Use on                                  | synthetic track only   |
| Block rail                              | steel galvanized profile, with handle, 15 support positions          |
| Casing of foot support                  | anodized aluminium, two fastening bolts, 5 foot support inclinations |
| Foot support                            | anodized aluminium, high, ergonomic shape, with synthetic track      |
| Adjusting lever of support inclinations | anodized aluminium profile, spring loaded                            |
| Block length [mm]                       | 893  |
| Block width [mm]                        | 357  |
| Block rail width [mm]                   | 70   |
| Block rail height [mm]                  | 45   |
| Max. foot support height [mm]           | 228  |
| Net weight [kg]                         | 6,94   |







### III. Operation and maintenance

The starting blocks must be stored in a roofed and dry place. The product does not require any special maintenance proceedings.

### IV. Packing and transport

The starting block is packed in a carton box:

|                             | <b>contents</b>                | <b>1 pc</b> | <b>2 pcs</b> |
|-----------------------------|--------------------------------|-------------|--------------|
| <b>Box's dimensions [m]</b> | <b>length L</b>                | 0,92        | 0,92         |
|                             | <b>width B</b>                 | 0,34        | 0,34         |
|                             | <b>height H</b>                | 0,18        | 0,18         |
|                             | <b>Volume [ m<sup>3</sup>]</b> | 0,056       | 0,056        |
| <b>Gross weight [kg]</b>    |                                | 8,08        | 15,02        |



## V. IAAF Certificates

International Association of Athletics Federations



# Product Certificate

*The IAAF is pleased to certify hereby that the following product:*

**Product's Trade Name:**  
Starting blocks, Competition

**Description, Colour / Absolute Thickness:**  
Steel, aluminium, high foot supports, Steel

**Company Name, Country:**  
Polanik Sp. z o. o. - Sp. K., POL

**Catalogue Number:**  
PBS15-03-W

**IAAF Certification Number:**  
E-16-0869

meets the dimensional requirements for use in all international athletics competitions.

It is for the purchaser to determine the item's fitness for the purpose based on his knowledge of the local conditions and use.

**Valid from:**  
1 February 2016

**Until the last day of:**  
February 2020

This certificate is issued in accordance with the terms and conditions of the IAAF Certification System of track and field facilities, implements and competition equipment.

  
**SEBASTIAN COE**  
IAAF President

  
**JORGE SALCEDO**  
IAAF Technical Committee Chairman

