

TECHNICAL SPECIFICATION

Shot put throwing circle S-243



File: 2021-05-28
PRODUCT SUPPORT
Paweł Ciechanowski
p.ciechanowski@polanik.com



Warning!

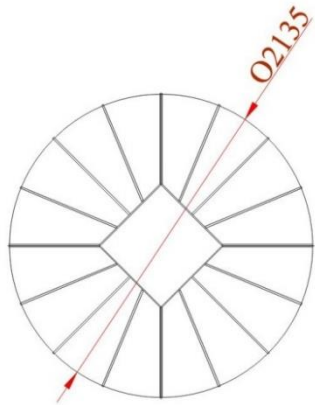
The product sensitive to impacts – handle with care!
 Read this manual carefully before assembly and installation.

I. Use

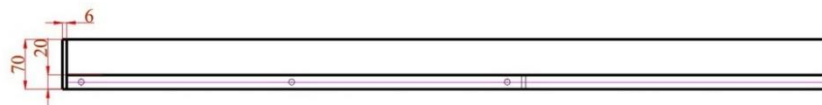
Throwing circle S-243 is designed for installing in the shot put throwing facility.

II. Technical specification

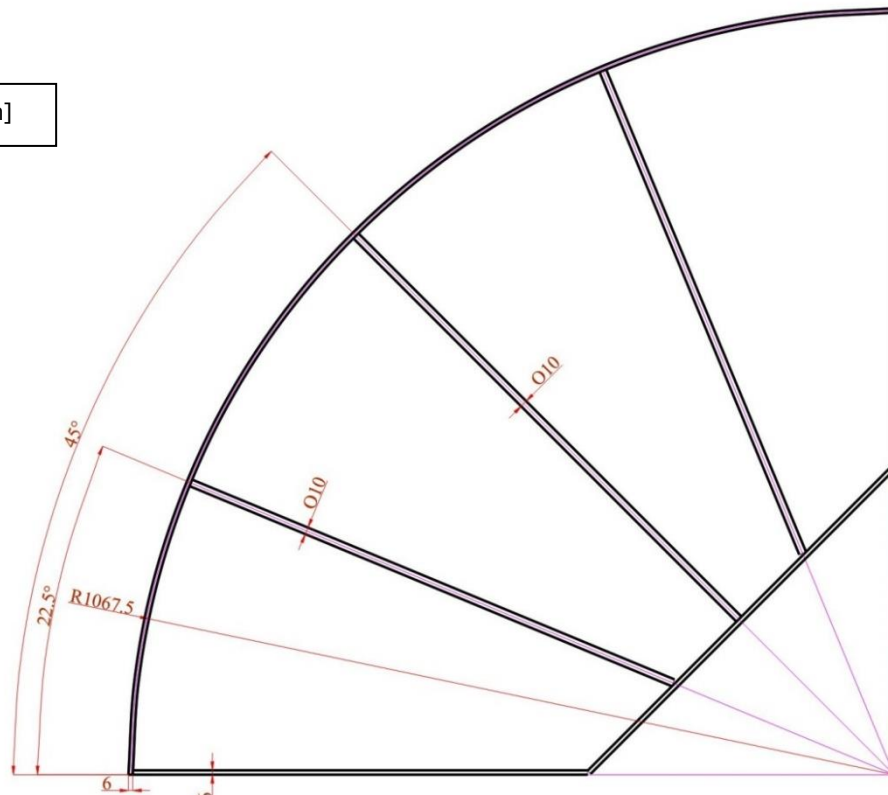
1:5



Code	S-243
Inside diameter [mm]	2135
Weight [kg]	34,4
Number of segments [pcs]	4
Construction	designed for embedding in the field surface, galvanized steel segments screwed together with 8 bolts, inside surface painted in white
IAAF certificate no.	E-06-0450
Packing	foiled and put on a pallet



[mm]



The producer reserves the right to introduce without warning changes in product constructions and colours.

III. Assembly

Warning!
The product sensitive to impacts – handle with care!

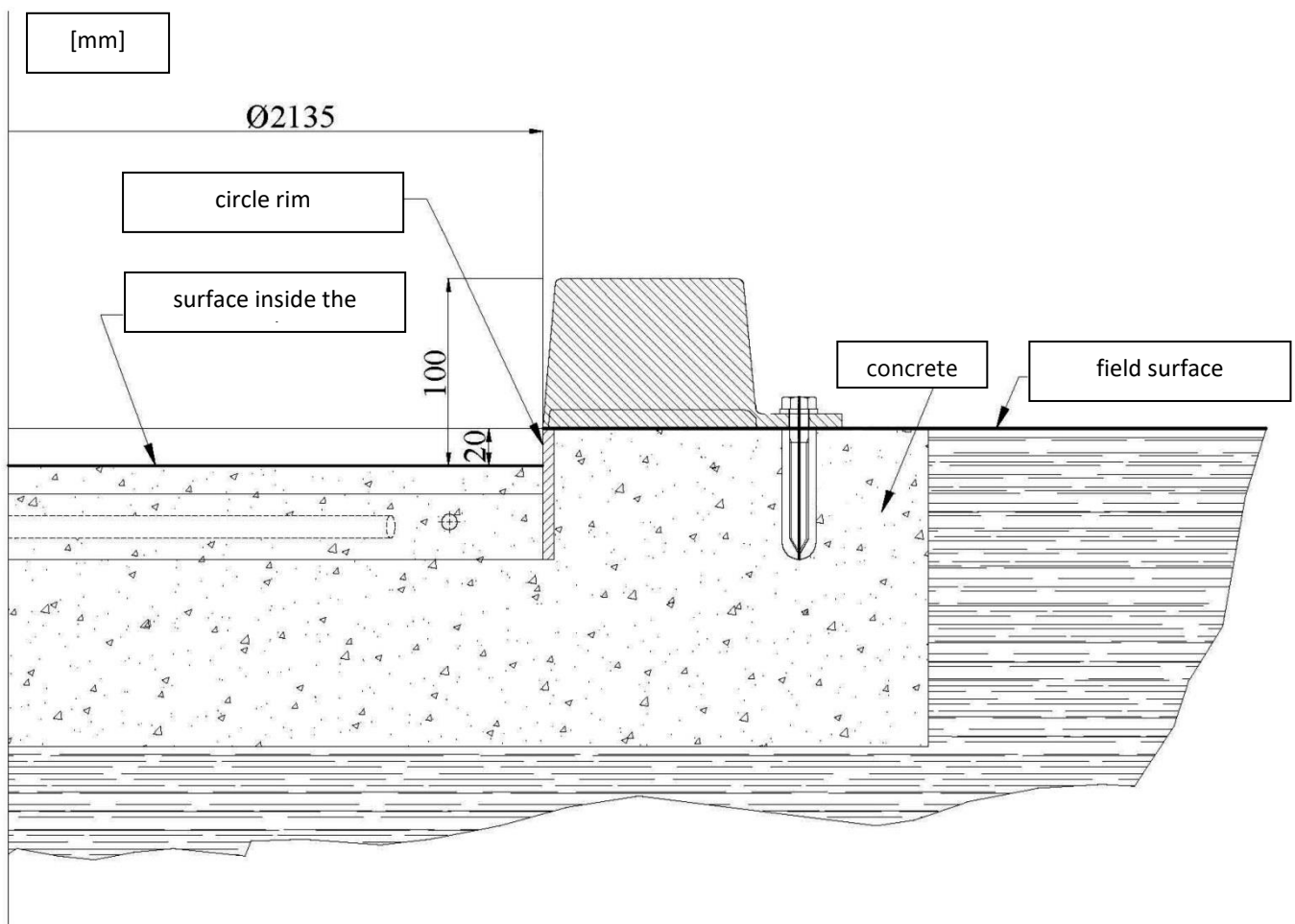
Place the circle segments on a flat and even surface, next use included screws to screw the segments together only with hands. Then check the diameter with a measuring tape in four points on the circle edge (at 12, 3, 6 and 9 o'clock), each time if it is needed please move the segments to adjust the diameter to 2135 mm with allowance +/- 5 mm. Next tighten the screws with wrenches. Finally check the diameter again.



Do not roll the assembled circle, it must be transported carefully to the place of the installation!

IV. Installation in concrete foundation

The assembled circle is to be embedded in the concrete foundation approx. 30 cm thick and diameter approx. 2,8 m, made of concrete class C20/25.



According to the rules (World Athletics Technical Rules Book C – C 2.1, Rule 32 and World Athletics Track and Field Facilities Manual edition 2019):

- a) the surface inside the circle shall be lower than the surface outside by $20 \text{ mm} \pm 6 \text{ mm}$,
- b) stainless pipes (for example brass ones) of diameter 20 mm should be laid flush in 4 points (or more) evenly distributed near the inside edge of the circle and they should be connected to the permeable ground layer or the arena drainage system,
- c) the centre of the circle should be marked, preferably with brass pipe of inside diameter 4 mm laid flush with the circle surface.

The efficiency of the throwing circle drainage depends upon the protection of the circle interior against dirt and sand.

The assembled circle prepared for embedding.



The circle embedded in concrete.



V. Operation and maintenance

The circle surface and the surrounding area should be kept clean and protected against humidity, sand and dirt using a special cover PC16-S0512 (available separately).



VI. IAAF certificate

International Association of Athletics Federations



Product Certificate

The IAAF is pleased to certify hereby that the following product:

Product's Trade Name: Fixed equipment, Throwing circle, Shot Put, Competition

Description, Colour / Absolute Thickness: Galvanised steel, White

Company Name, Country: Polanik Sp. z o. o. - Sp. K., POL

Catalogue Number: S-243

IAAF Certification Number: E-06-0450

meets the dimensional requirements for use in all international athletics competitions.

It is for the purchaser to determine the item's fitness for the purpose based on his knowledge of the local conditions and use.

Valid from: 1 October 2018

Until the last day of: October 2022

This certificate is issued in accordance with the terms and conditions of the IAAF Certification System of track and field facilities, implements and competition equipment.



JORGE SALCEDO
IAAF Technical Committee Chairman

